

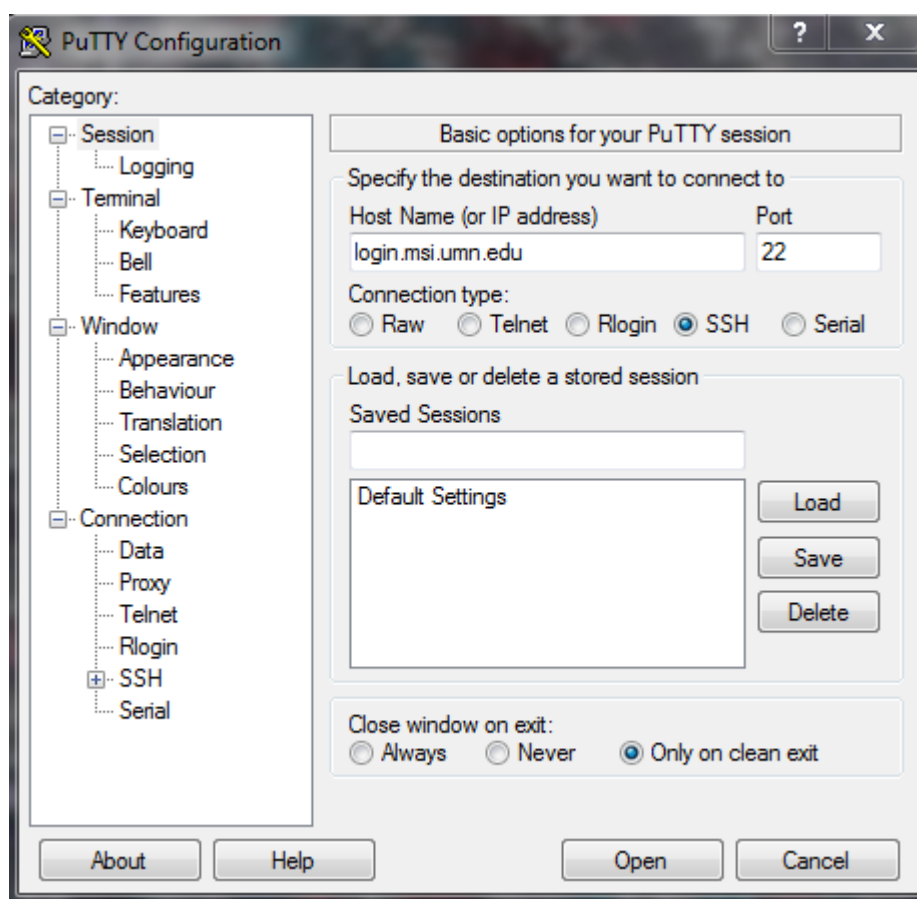
Instructions for Remote Access of MSI computers using Windows 7

in the Chemistry Department's 101D Smith Hall Computer Lab

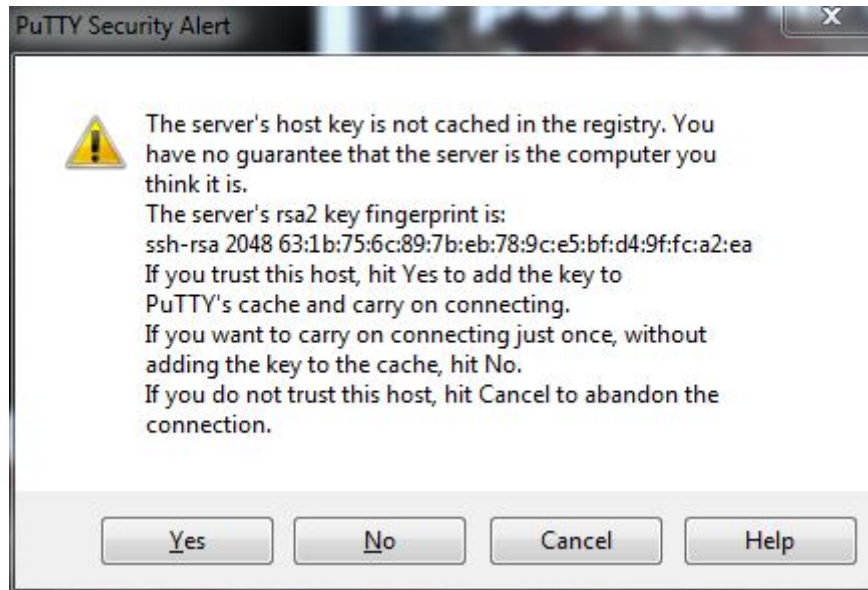
(revised 03Feb14)

1 – Connecting to MSI machines via Secure Shell (SSH)

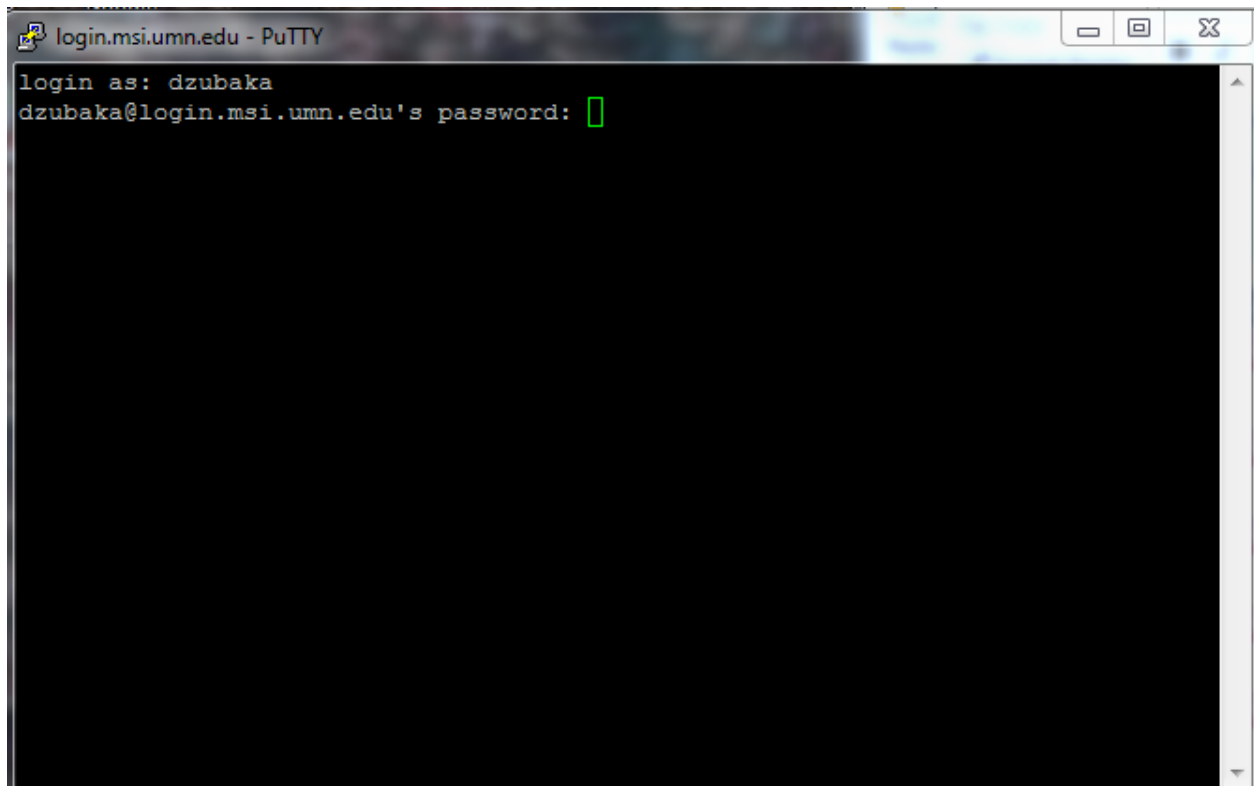
- Go to the Start menu, open the folder “All Programs”, then open the “internet” folder, and click on the “PuTTY” program.
- A window titled “PuTTY Configuration” will appear. In “Host Name (or IP address)” type the address of the MSI machine you are trying to connect to (login.msi.umn.edu). Click on “Open” to continue.



c) A Warning window may appear. Click <Yes> to continue.



d) A new window will ask for your MSI login. Type it in and press <Enter>. It will prompt you to enter your password: enter it and press <Enter>.



- e) If you type "ls" you will see that you are in your MSI folder. From here you can make new folders, write/read files, and login to the other MSI machines (ssh username@itasca.msi.umn.edu) to submit jobs to the queue.
- f) After completing your work, close the window to disconnect.

Note: PuTTY is freeware for Windows (but not Mac or Linux). You could use it at home to manipulate files in your MSI account:

<http://winscp.net/eng/download.php>

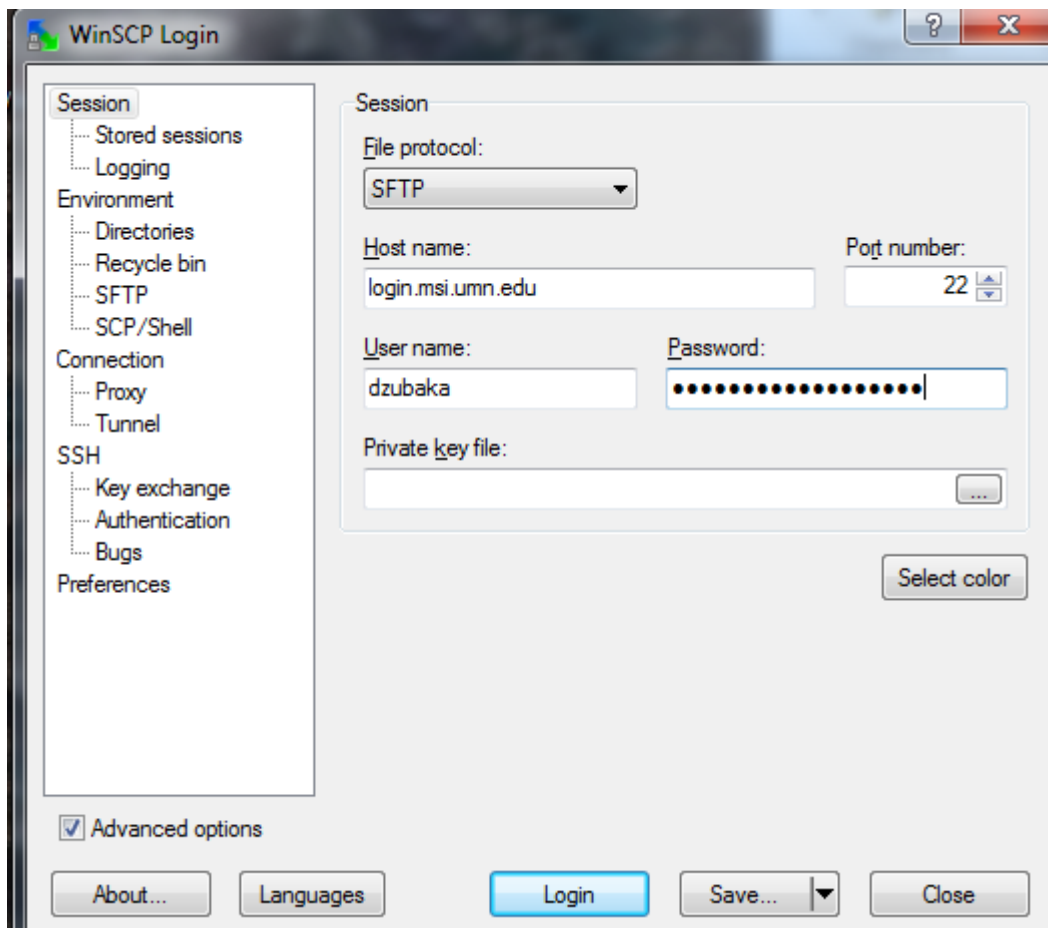
(scroll to the bottom of the page)

2 – File Transfer from/to MSI machines

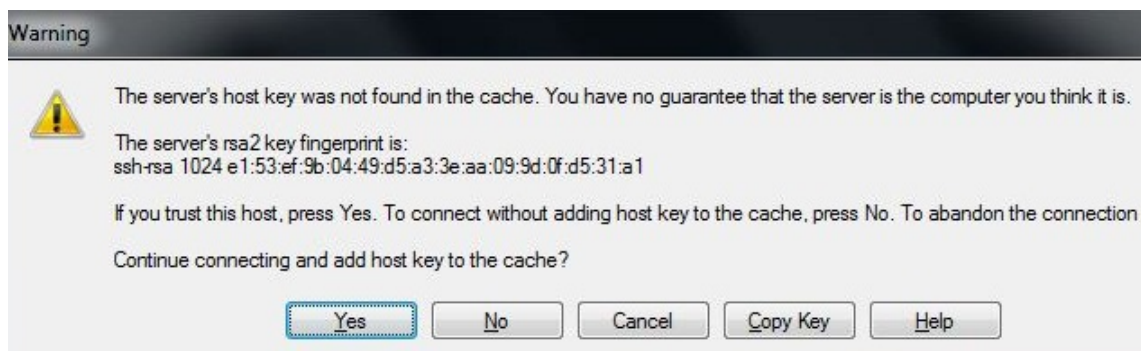
- a) Go to the Start menu, open the folder “All Programs”, then open the “internet” folder, and click on the WinSCP program.



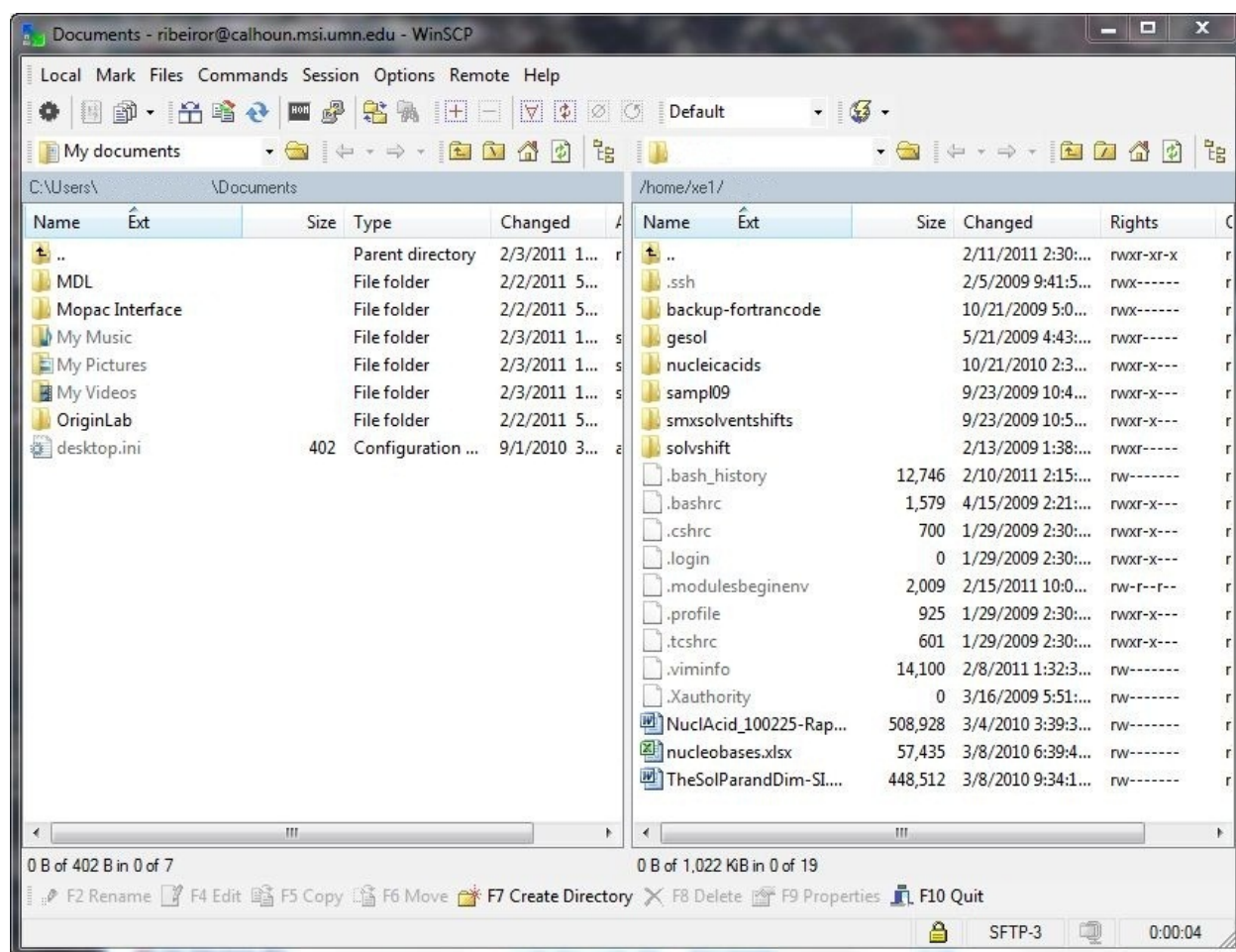
- b) A window titled “WinSCP Login” will appear. In “Host Name” type the address of the MSI machine you are trying to connect to (login.msi.umn.edu). In “User Name” type your MSI login. In “Password” type your MSI password. Press “Login” to continue.



c) A Warning window may appear. Click <Yes> to continue.



d) On your left you will see the folders of your local machine, i.e., your computer, and on the right you will see your folder in the MSI machine. You can copy files or folders by dragging files or folders from one side to the other (from left to the right would be from your computer to the MSI machine and vice-versa).



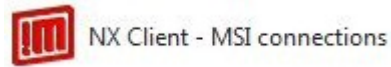
e) After completing your work, close the window to disconnect.

Note: WinSCP is freeware for Windows (but not Mac or Linux). You could use it at home to send/transfer files to your MSI account:

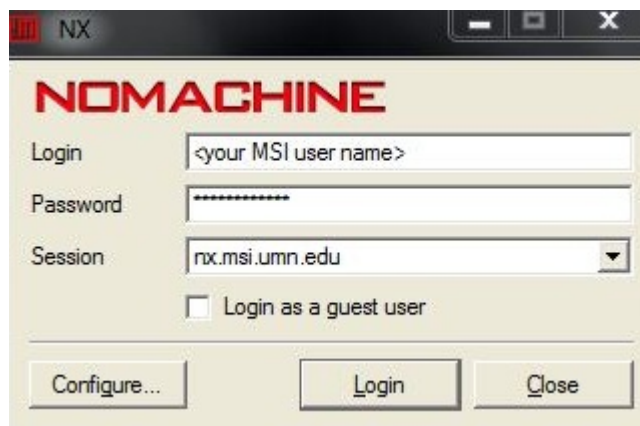
<http://winscp.net/eng/download.php>

3 – Using GaussView remotely

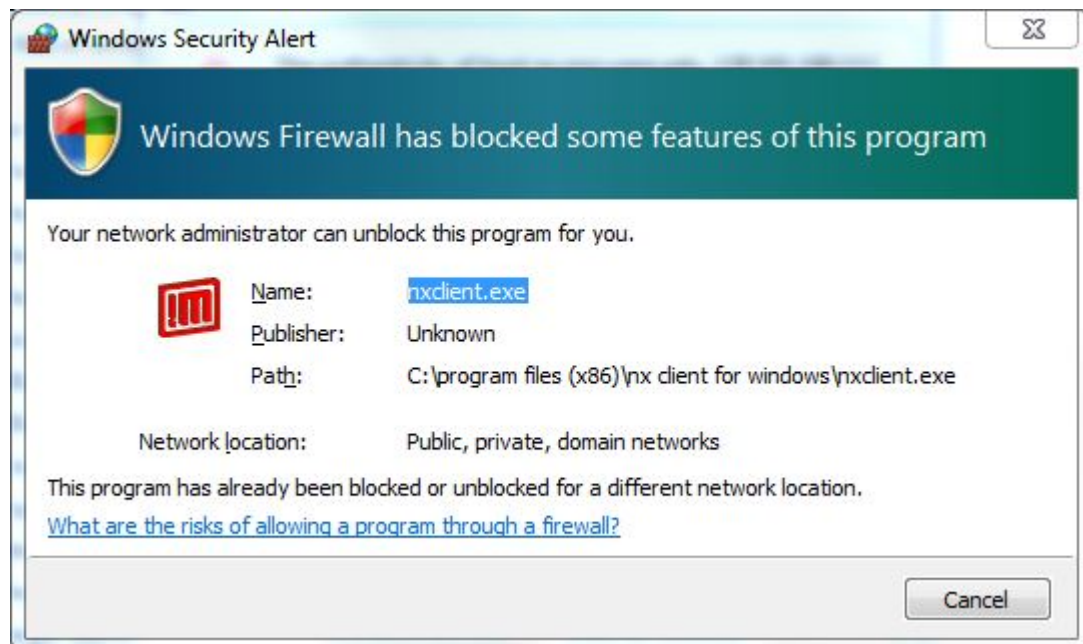
- a) Go to the Start menu and click on “NX Client – MSI Connections”.



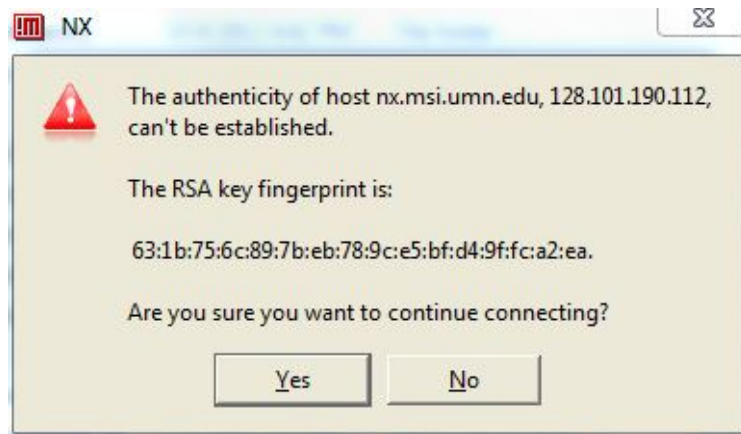
- b) In the Login field type your MSI login. In the Password field, type your MSI password. Click “Login” to continue.



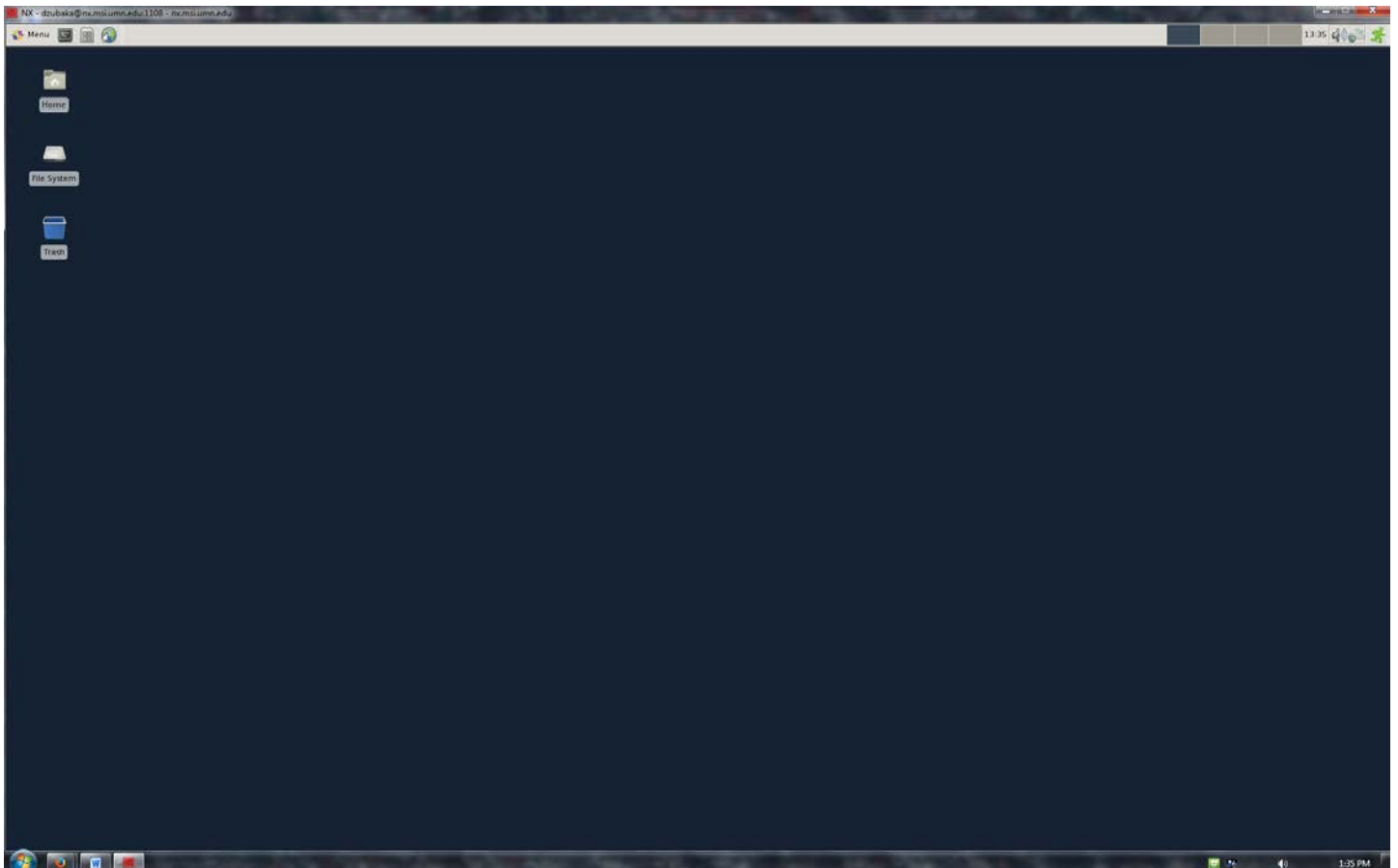
- c) A Firewall Warning window may appear. Click <Cancel> to continue.



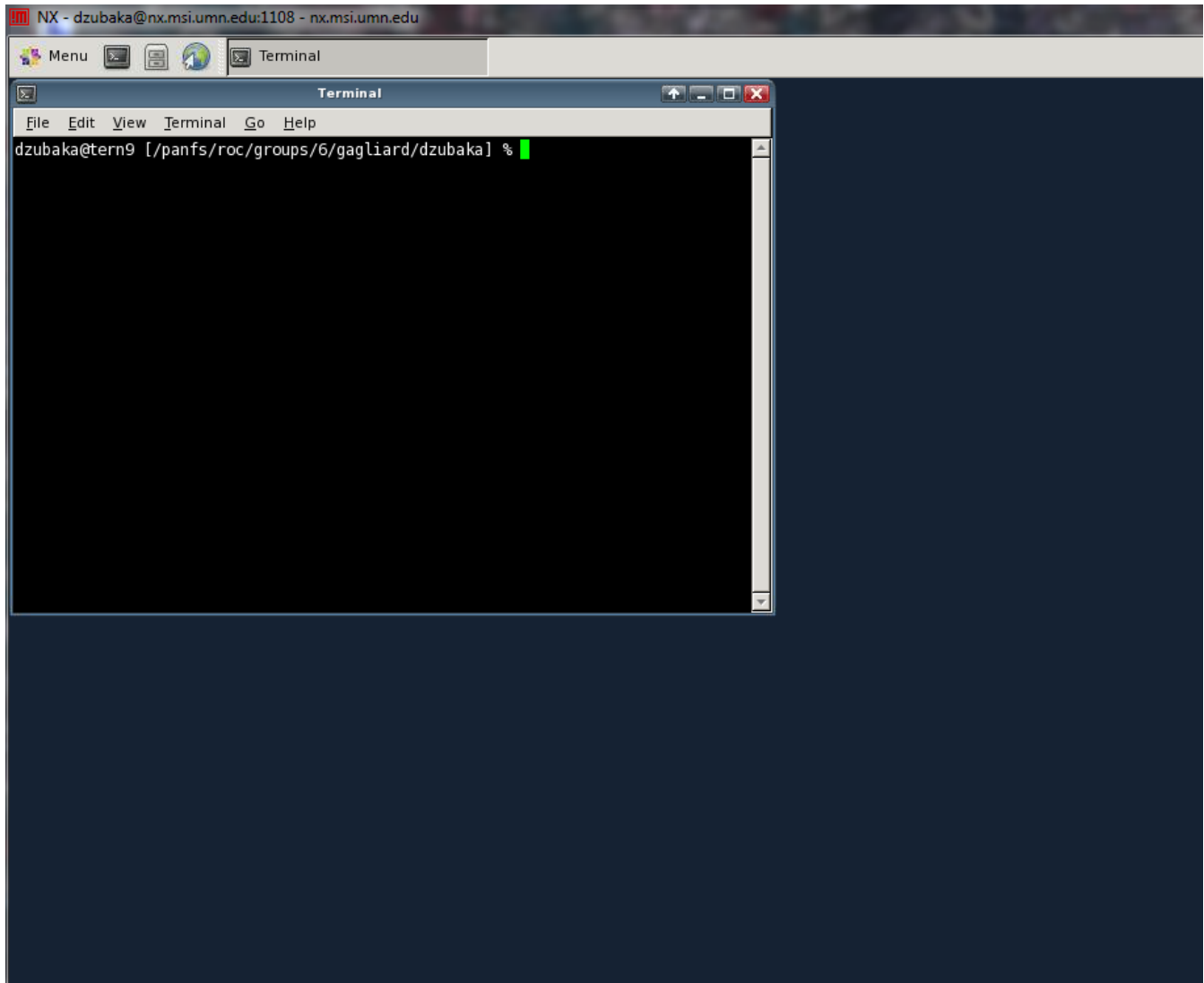
d) A Warning window may appear. Click <Yes> to continue.



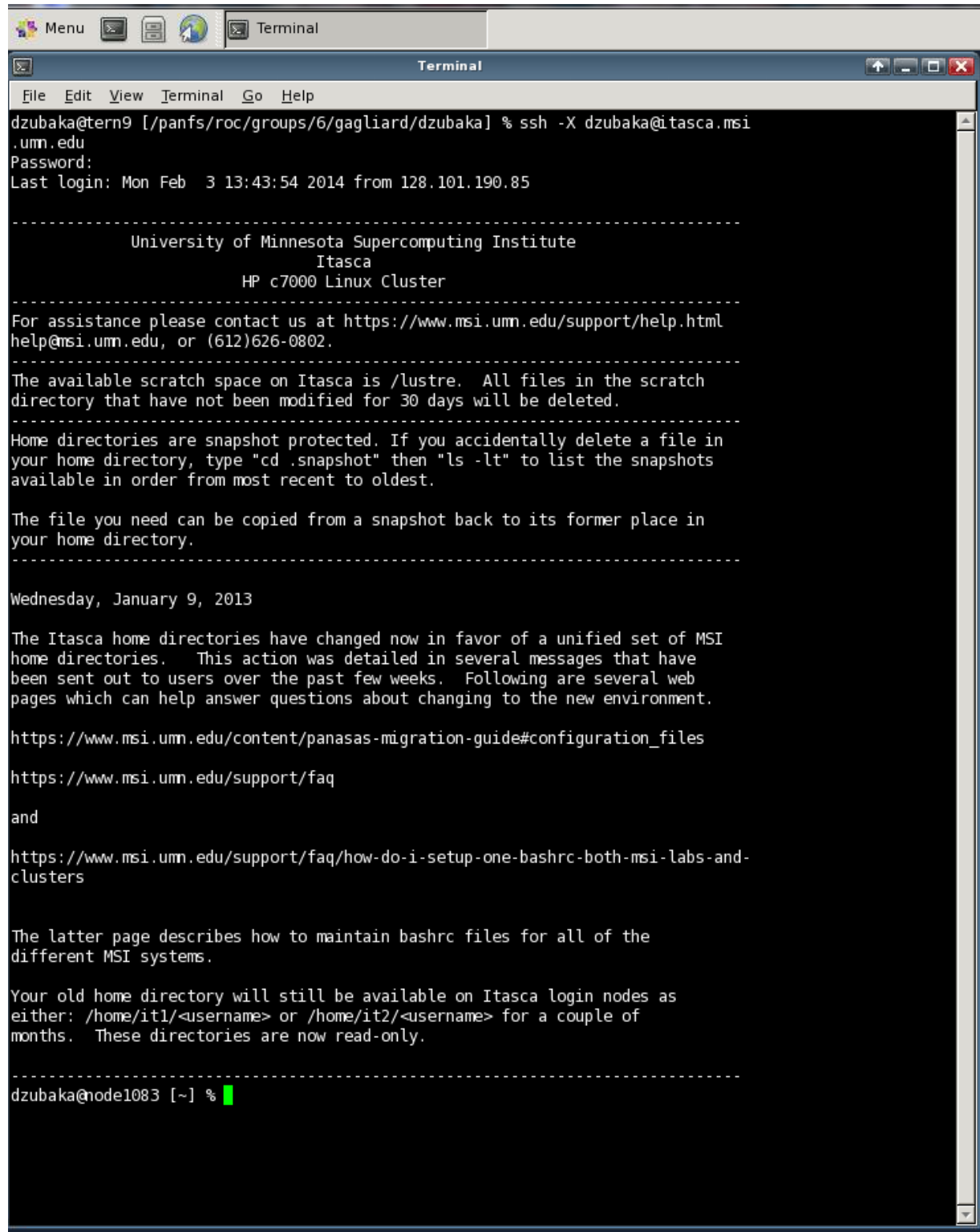
e) If a new desktop appears, you are connected.



- f) Along the top menu bar, just to the right of “Menu” you will see the “Terminal Emulator” button. Click on it to open the Terminal window.



- g) A terminal window will appear. Type “ssh -X <MSI username>@itasca.msi.umn.edu” (That is a capital ‘X’, not a lower case ‘x’.) The terminal will ask for your MSI password, type it and press <Enter>.



```
dzubaka@tern9 [/panfs/roc/groups/6/gagliard/dzubaka] % ssh -X dzubaka@itasca.msi
.um.edu
Password:
Last login: Mon Feb  3 13:43:54 2014 from 128.101.190.85

-----
                University of Minnesota Supercomputing Institute
                    Itasca
                HP c7000 Linux Cluster
-----

For assistance please contact us at https://www.msi.umn.edu/support/help.html
help@msi.umn.edu, or (612)626-0802.

-----

The available scratch space on Itasca is /lustre. All files in the scratch
directory that have not been modified for 30 days will be deleted.

-----

Home directories are snapshot protected. If you accidentally delete a file in
your home directory, type "cd .snapshot" then "ls -lt" to list the snapshots
available in order from most recent to oldest.

The file you need can be copied from a snapshot back to its former place in
your home directory.

-----

Wednesday, January 9, 2013

The Itasca home directories have changed now in favor of a unified set of MSI
home directories. This action was detailed in several messages that have
been sent out to users over the past few weeks. Following are several web
pages which can help answer questions about changing to the new environment.

https://www.msi.umn.edu/content/panasas-migration-guide#configuration\_files

https://www.msi.umn.edu/support/faq

and

https://www.msi.umn.edu/support/faq/how-do-i-setup-one-bashrc-both-msi-labs-and-clusters

The latter page describes how to maintain bashrc files for all of the
different MSI systems.

Your old home directory will still be available on Itasca login nodes as
either: /home/it1/<username> or /home/it2/<username> for a couple of
months. These directories are now read-only.

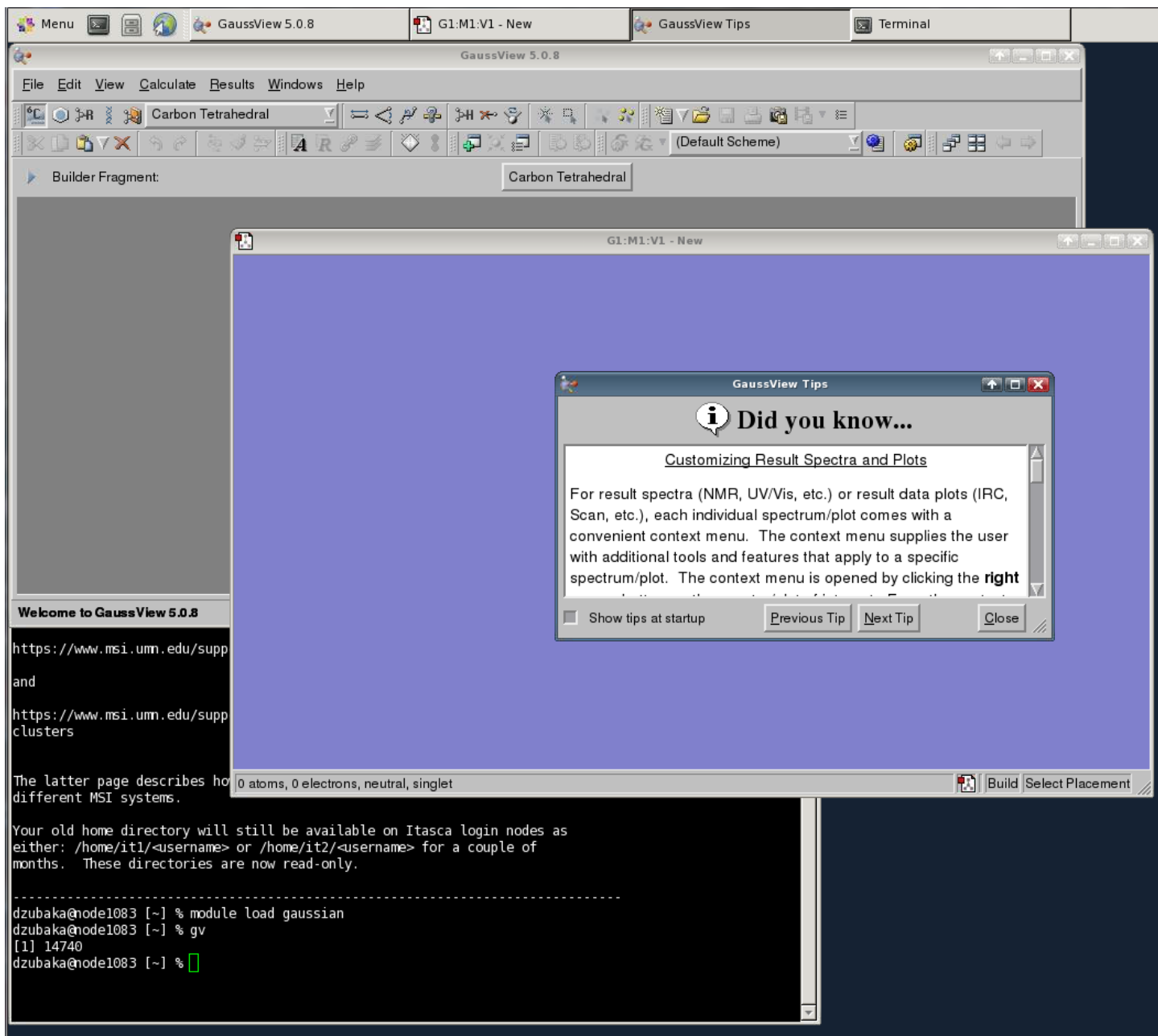
-----
dzubaka@node1083 [~] % █
```

h) You can now open GaussView from the terminal by typing the following commands:

```
module load gaussian <Enter>
```

```
gv <Enter>
```

note: It may take 5-10 seconds to load. Please be patient.



- i) Click on “Close” button in the GaussView Tips window to being using GaussView. After completing your work, be sure to close GaussView, the terminal window, and the NX desktop window.

Note: NXWindows is a freeware. You can download it for Mac, Windows, and Linux:

<http://www.nomachine.com/download.php>

You can configure it with the instructions provided at:

<https://www.msi.umn.edu/support/nx/3.5>

If you need any help feel free to send an e-mail to dzub0005@umn.edu

Other Helpful References:

<https://www.msi.umn.edu/support/nx/>

<https://www.msi.umn.edu/sw/gaussview/>