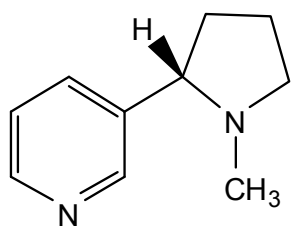


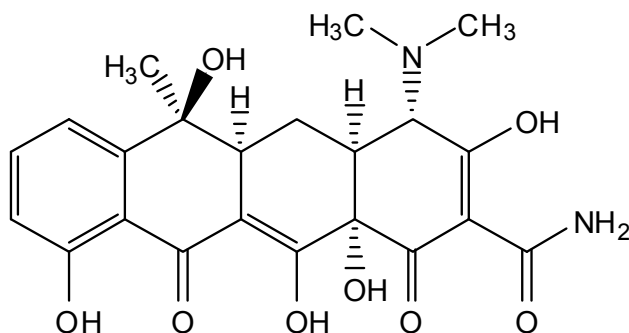
Chemistry 2301

Workshop 10
Assigning (*R*) and (*S*) Stereochemistry

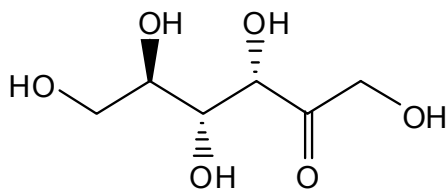
Find all of the stereocenters in the following molecules, and label each one (*R*) or (*S*) according to Cahn-Ingold-Prelog nomenclature rules.



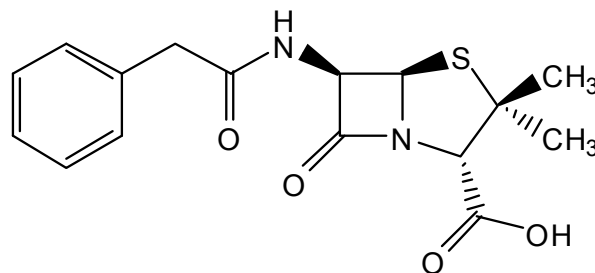
nicotine



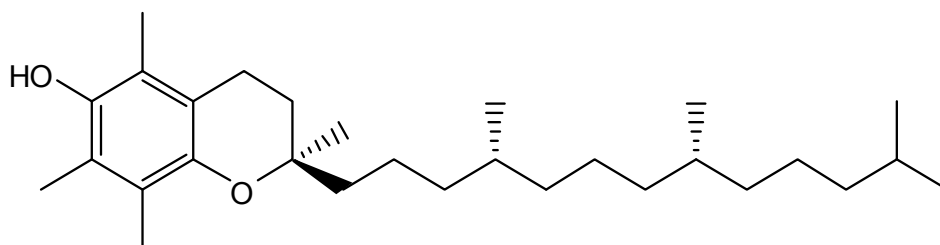
tetracycline



D-fructose



penicillin



natural vitamin E
(synthetic material is mixture of 8 diastereomers)