

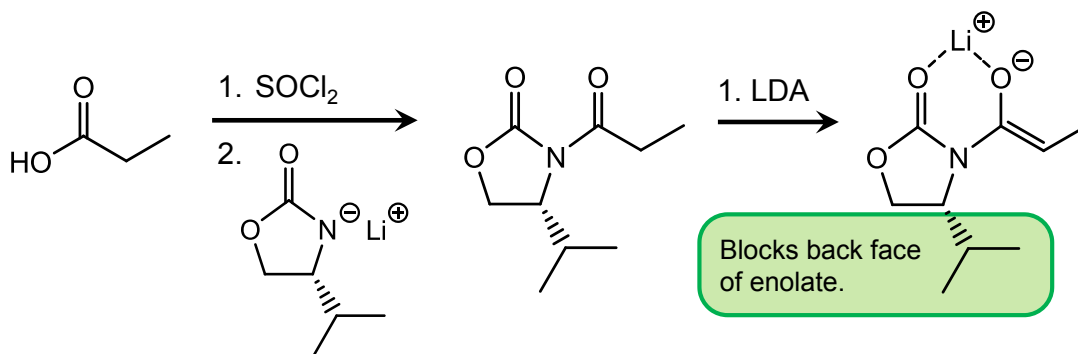
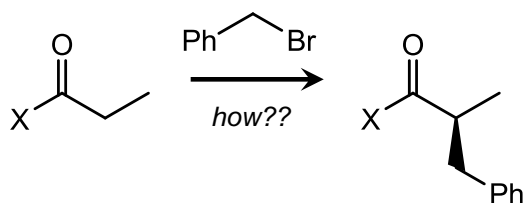
Asymmetric Induction via Chiral Auxiliaries

So what if you wanted an enolate alkylation to generate enantiomerically pure product?

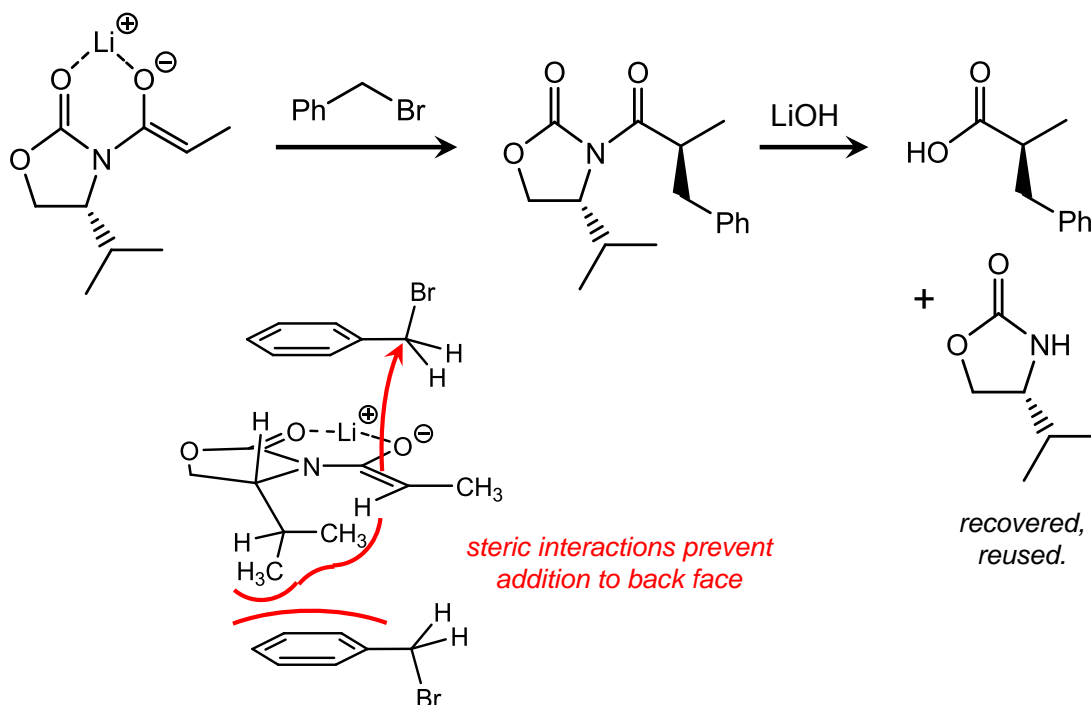
Solution:

Use a temporary chiral group to direct enolate addition.

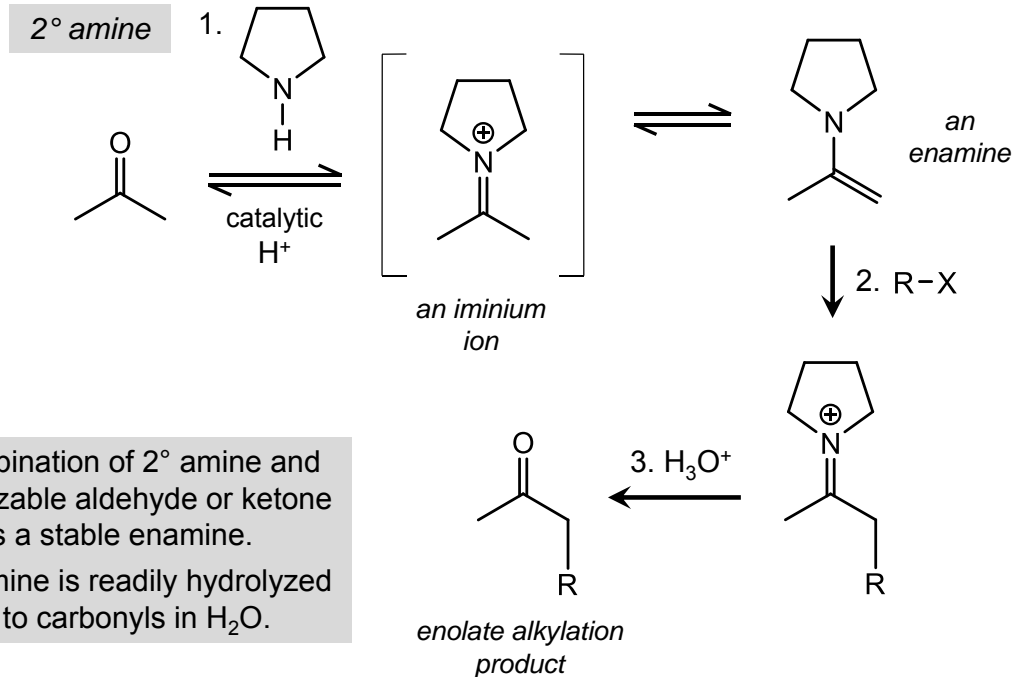
Example:



Asymmetric Induction via Chiral Auxiliaries



Enamine Alkylation



Combination of 2° amine and enolizable aldehyde or ketone forms a stable enamine.
Enamine is readily hydrolyzed back to carbonyls in H₂O.