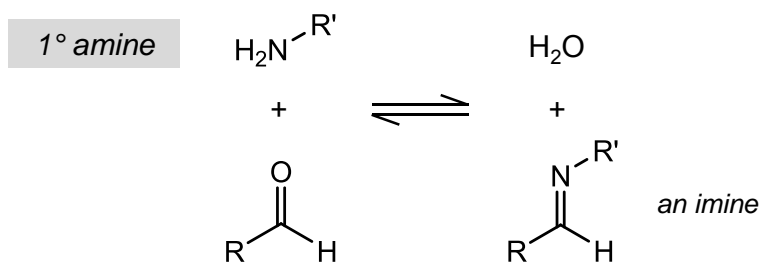
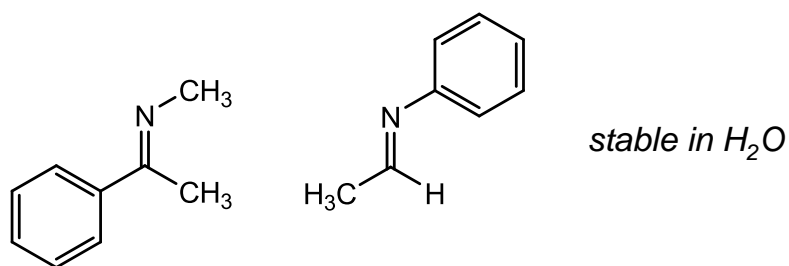


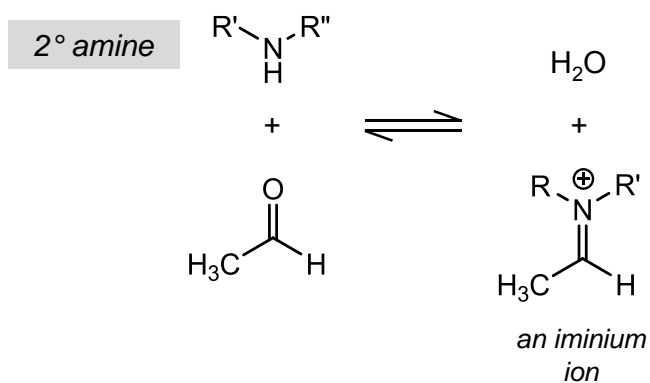
Imines



Equilibrium lies to the right only if R or R' is aromatic (or if H₂O is removed from the reaction).

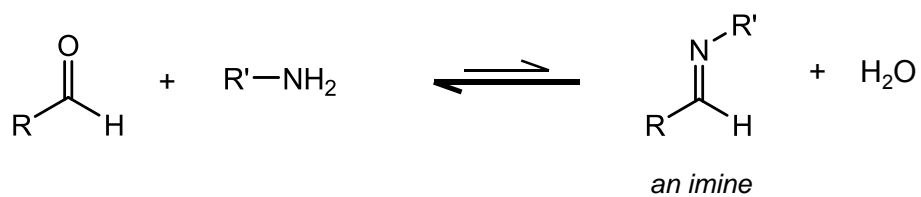


Iminium Ions and Enamines



Stability of iminium ions is similar to imines; aryl groups stabilize them, but otherwise they readily hydrolyze back to carbonyls.

Hydrazones and Oximes



*But more electron rich amine derivatives
push equilibrium to the right...*

