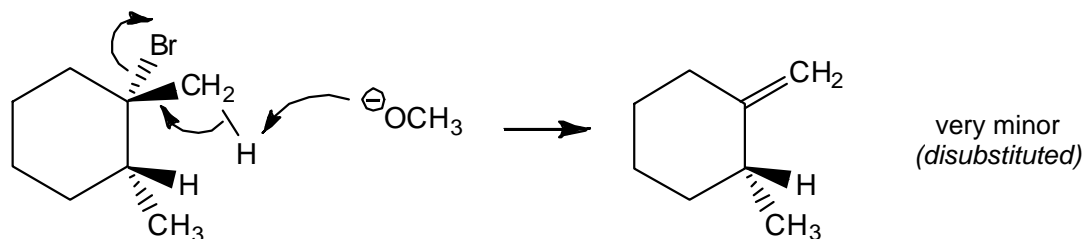
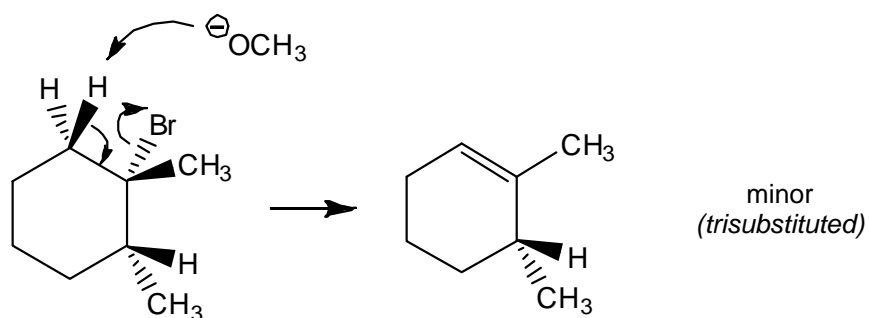
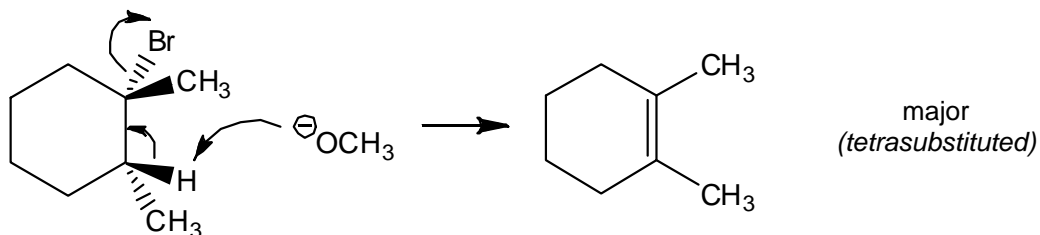
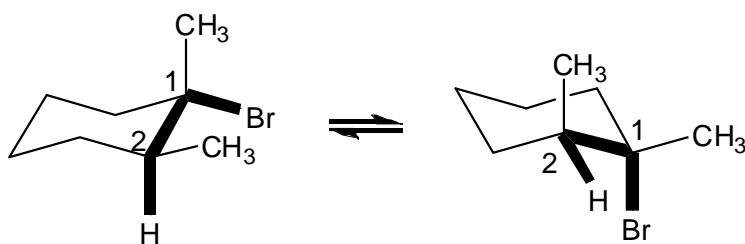


**In-Class Solutions:
E2 Reactions with Multiple Products**

1.



2. The tetrasubstituted alkene cannot form. Unlike the case above, the *cis*-dimethylcyclohexane cannot assume a chair conformer in which the H at carbon 2 and the leaving Br are anti-periplanar:



So, because H2 and the leaving group can't be across from each other, the elimination can't take place at this position. However, the other H's can assume an anti-periplanar arrangement, and so the other two products can still form:

