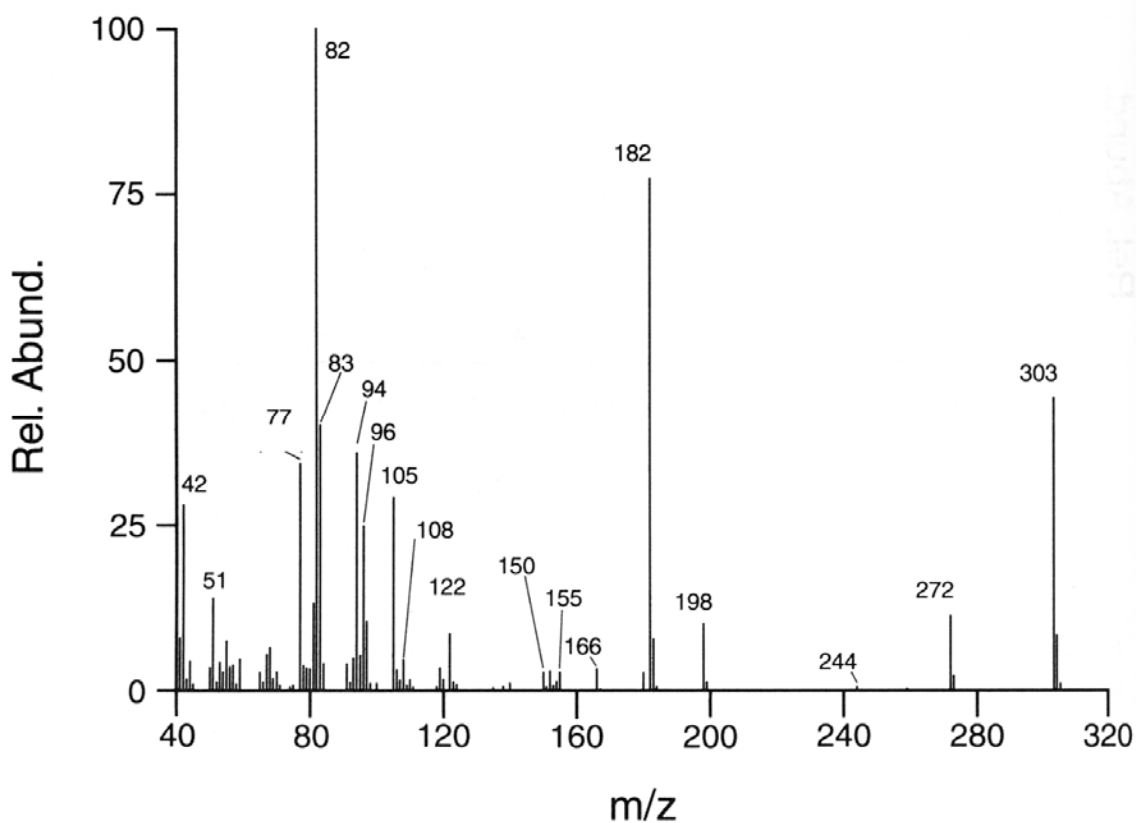
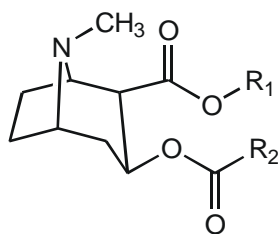


**Discussion Section Exercise:
EI Fragmentation**

The EI mass spectrum of cocaine ($R_1 = \text{CH}_3$, $R_2 = \text{Ph}$) is shown below.



- For the four highest-mass fragments, what masses are being ejected from the parent? What fragmentation mechanisms might be responsible for these losses?
- What other (lower-mass) fragment peaks can you explain simply?

- c. The mass spectra of three cocaine analogs are given below. Based on what you know about the fragmentation of cocaine, what might R_1 and R_2 be for these three compounds?

