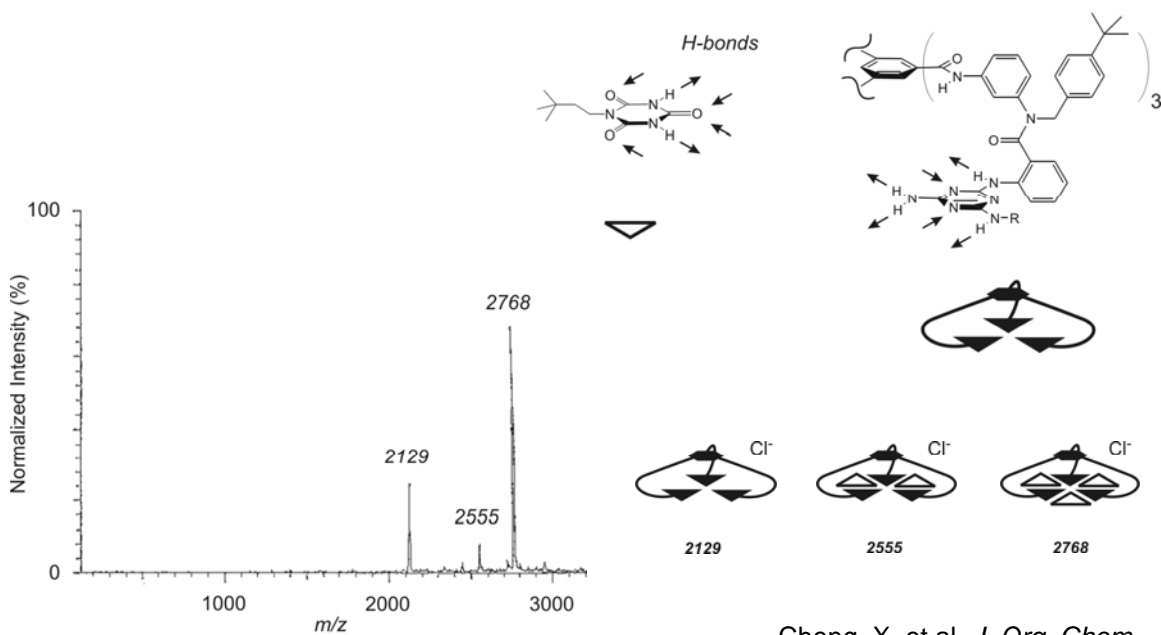


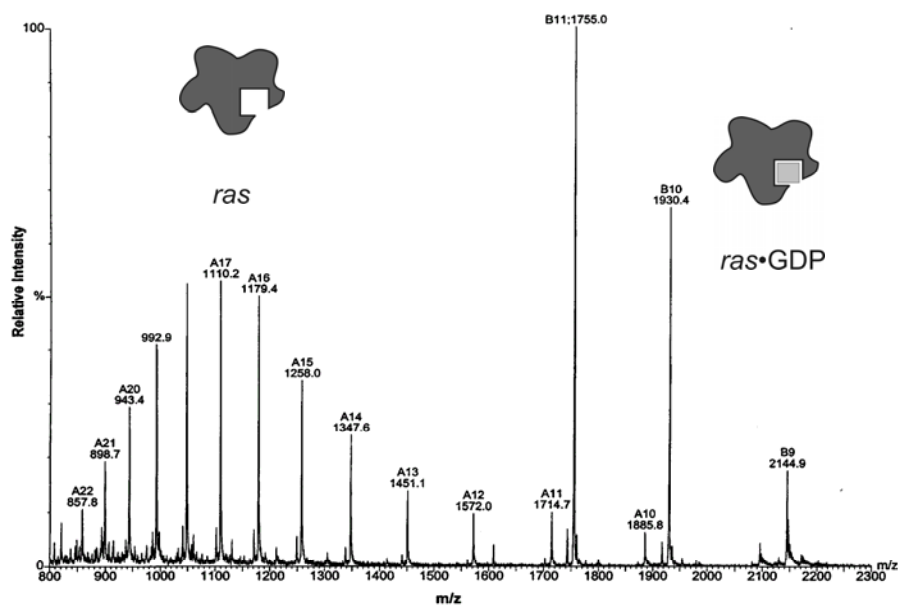
ESI Mass Spectrometry of Macromolecular Complexes



ESI-MS, negative ion mode (Cl^- in source)

Cheng, X. et al. *J. Org. Chem.* **1996**, 61, 2204.

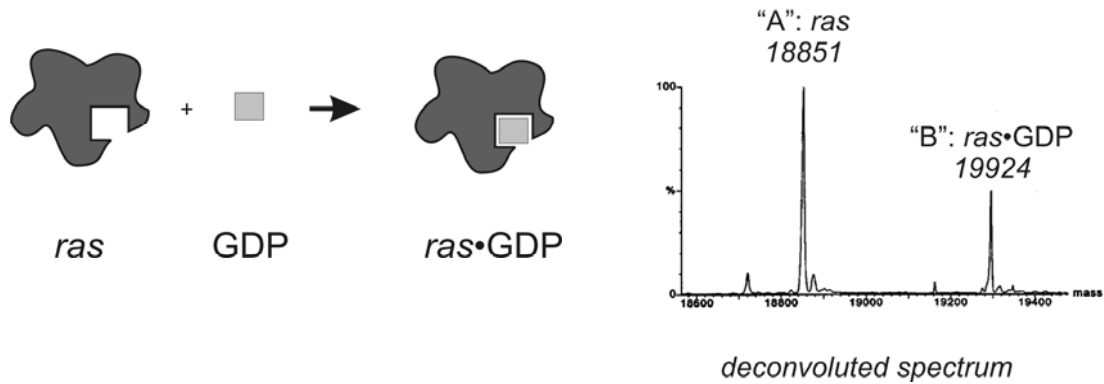
ESI Mass Spectrometry of Macromolecular Complexes



ESI-MS of mixture of *ras* protein host and GDP, its small-molecule guest

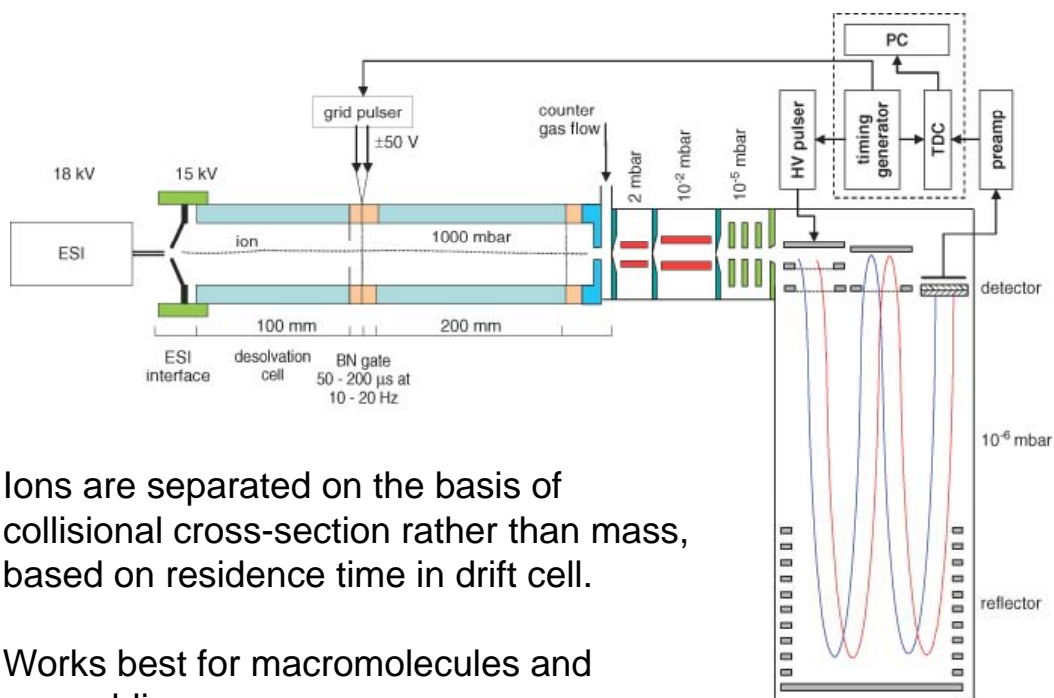
Pramanik, B. N. et al. *J. Mass Spectrom.* **1998**, 33, 911.

ESI Mass Spectrometry of Macromolecular Complexes



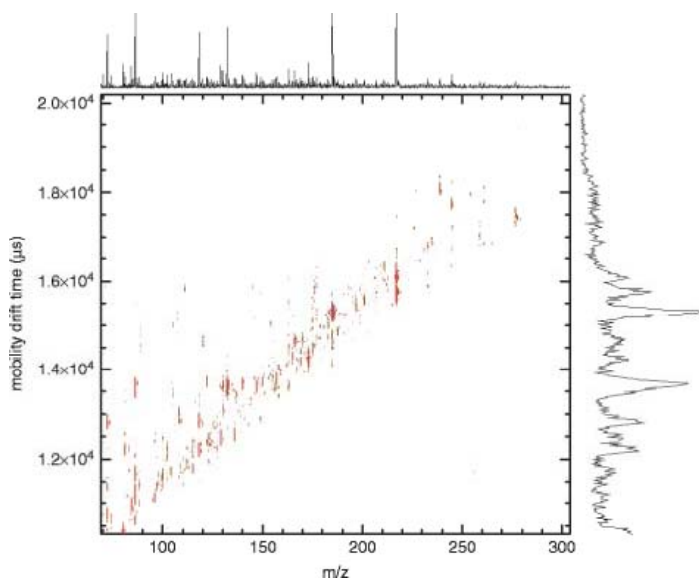
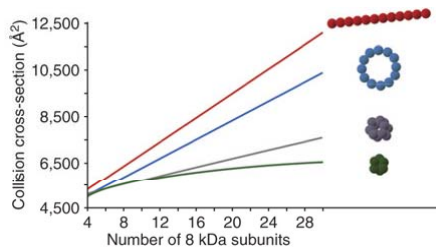
- Great method for screening combinatorial libraries of potential ligands

Ion Mobility Spectrometry (and IMS-MS)

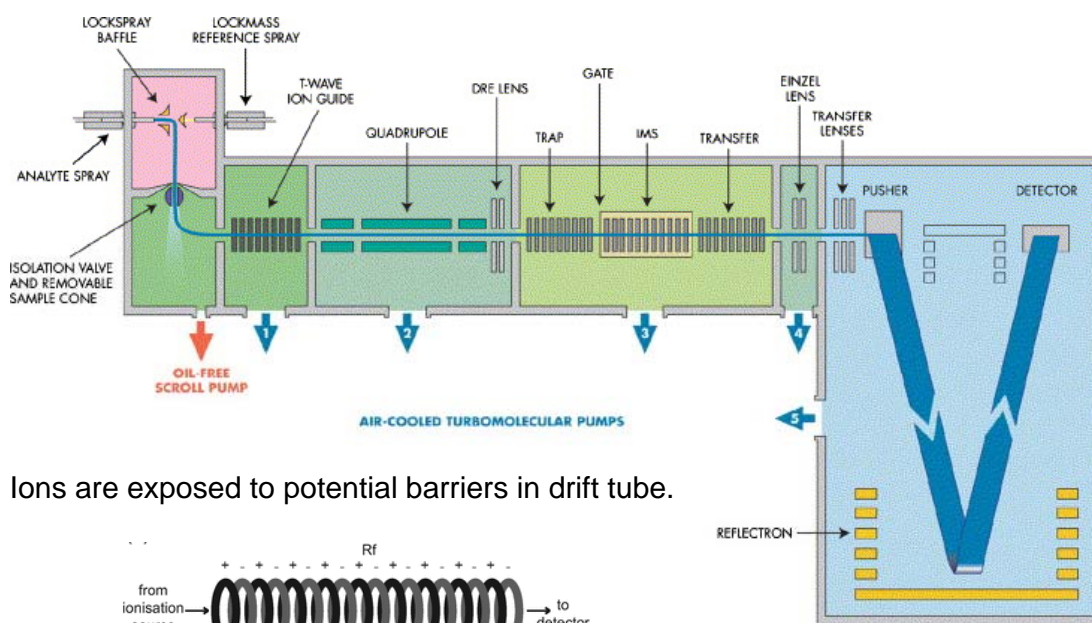


Ion Mobility Spectrometry

Different ion structures lead to different residence times in drift cell.



Traveling Wave IMS (Synapt HDMS)



Ions are exposed to potential barriers in drift tube.

