



UNIVERSITY OF MINNESOTA
Driven to Discover™

Abbott Workshop Series in Synthetic Organic and Medicinal Chemistry

PROFESSOR STEVEN BURKE

Department of Chemistry, University of Wisconsin, Madison

Research encompasses a broad range of synthetic and bioorganic projects. Natural products total synthesis and synthetic methods development are areas of pursuit.

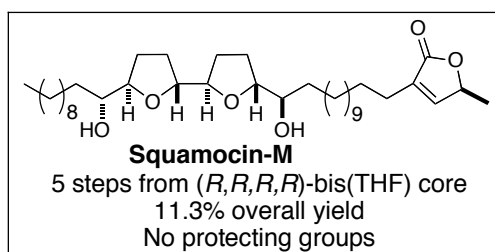
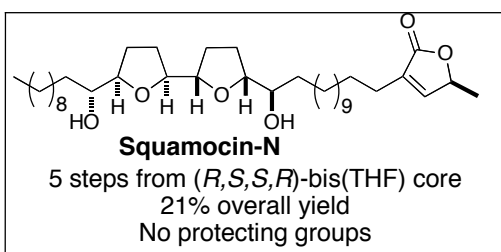
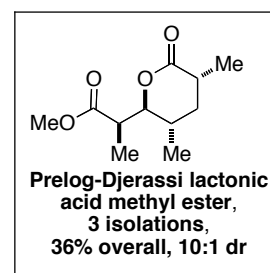
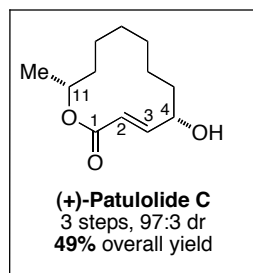
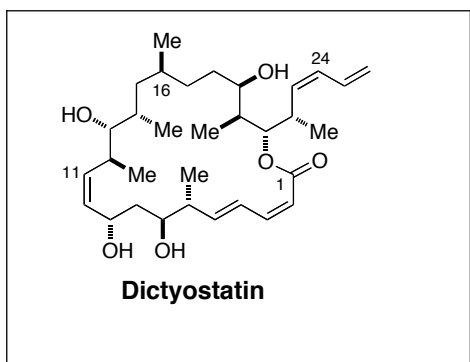
<http://www.chem.wisc.edu/users/burke>



Catalytic Asymmetric Synthesis of Natural Products

Abstract:

Development and application of a variety of catalytic asymmetric reactions in recent syntheses of several natural products will be described. The specific examples below will be used to illustrate a range of challenges in terms of structural complexity and diversity. Exploitation of symmetry, bi-directional synthesis, and atom economical catalytic methods will be featured.



4 p.m. Friday, March 16 117/119 Smith Hall

Host: Professor Thomas Hoye

Sponsored by:

Abbott Laboratories